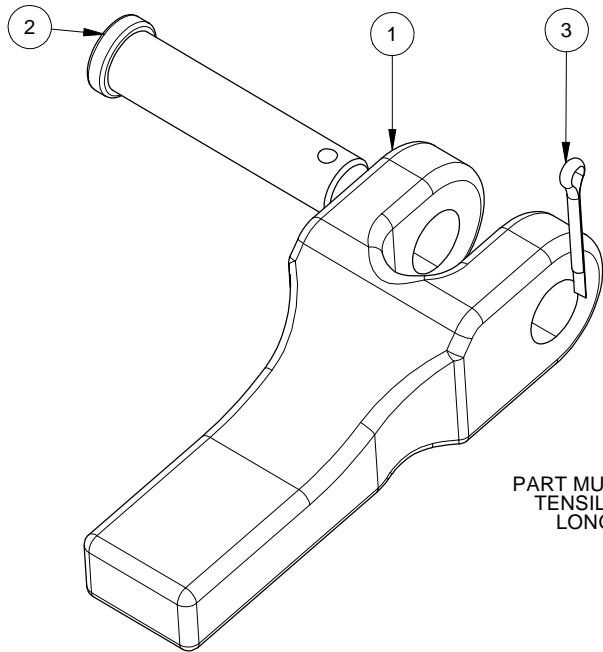
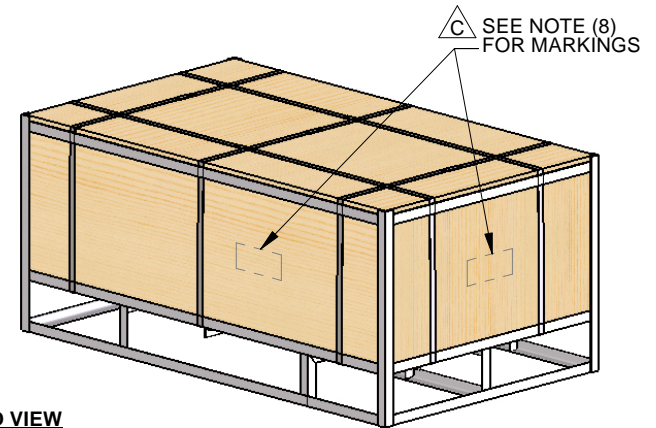
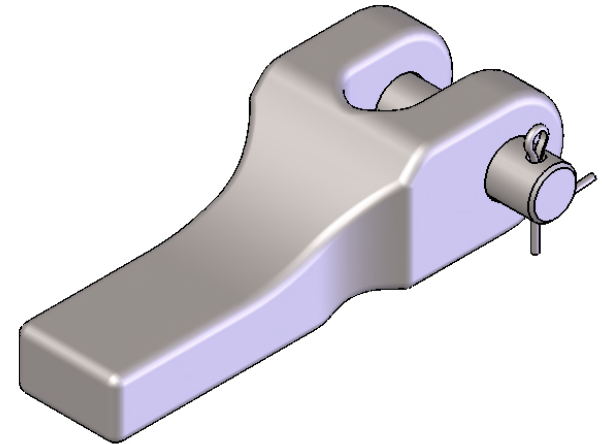
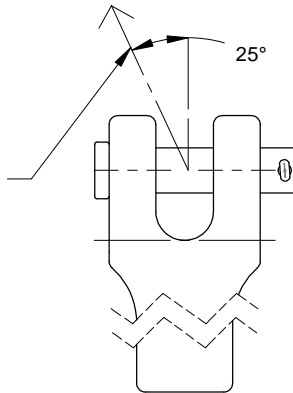


REVISIONS					
REV.	DESCRIPTION	BY	DATE	CHK	DATE
A	ADDED TENSILE TEST REQUIREMENTS.	PDZ	11/12/2012	TAJ	11/12/2012
B	CHANGED TENSILE TEST REQUIREMENTS FROM 10,000 LBF TO 25,000 LBF. UPDATED COTTER PIN TO MATCH APPROVED SAMPLES.	BH	3/5/2013	BJ	3/5/2013
C	UPDATED PACKAGING REQUIREMENTS. ADDED PACKED VIEW TO SHOW 'MARKINGS'.	BH	6/17/2013	BJ	6/17/2013



**△ A △ B**  
 PART MUST PASS 25,000 LBF  
 TENSILE TEST 25° FROM  
 LONGITUDINAL AXIS



**NOTES:**

- UNSPECIFIED DIMENSIONS TO MATCH ORIGINAL SAMPLE.
- REMOVE ALL BURRS AND SHARP EDGES.
- (50) CHAIN RETAINERS TO BE PLACED INSIDE A .1MM THK. HEAT SEALED POLYBAG.
- (50) COTTER PINS TO BE PLACED INSIDE A .1MM THK. HEAT SEALED POLYBAG.
- (50) CLEVIS PINS TO BE PLACED INSIDE A .1MM THK. HEAT SEALED POLYBAG.
- (1) POLYBAG OF CHAIN RETAINERS, (1) POLYBAG OF COTTER PINS, (1) POLYBAG OF CLEVIS PINS PER SPEP MASTER CARTON.
- (40) SPEP MASTER CARTONS TO BE LAYERED INSIDE A CRATE. CARTONS MUST BE TIGHTLY LAYERED INSIDE THE CRATE, THERE MUST BE NO EMPTY SPACE. CRATE MUST MEASURE 48" LONG X 30" WIDE X 22" HEIGHT. CRATES MUST BE VERY STRONG WITH EXTRA SUPPORTS ON BOTTOM.
- ADD THE FOLLOWING MARKINGS TO AREA SHOWN: **△ C**

**D388**

**P.O. NO** \_\_\_\_\_

**DRAWING: 19250 REV** \_\_\_\_\_

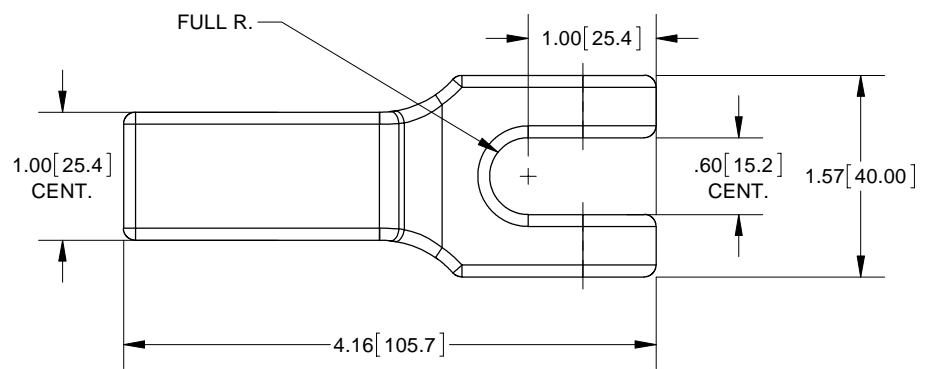
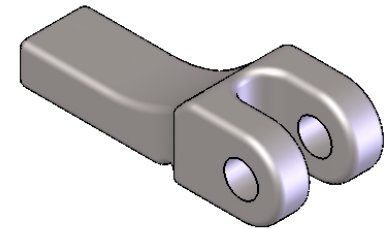
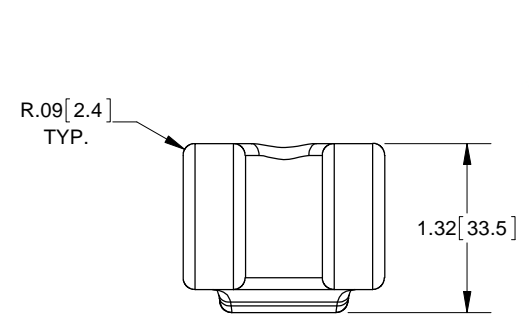
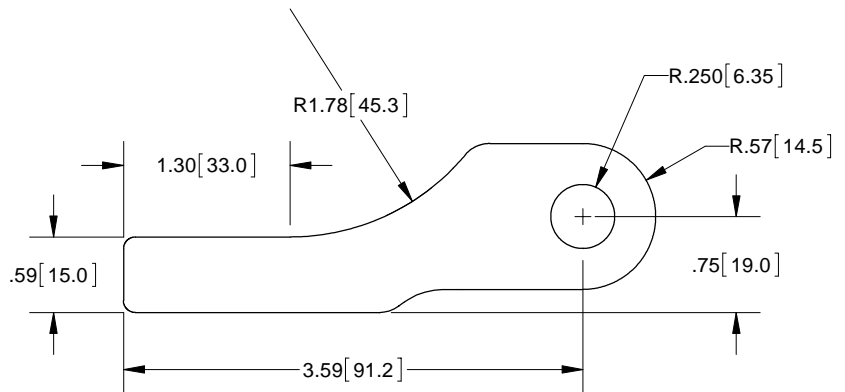
**DATE:** \_\_\_\_\_

**QTY: 2000**

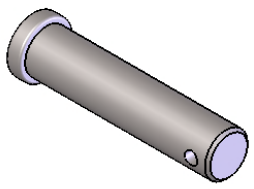
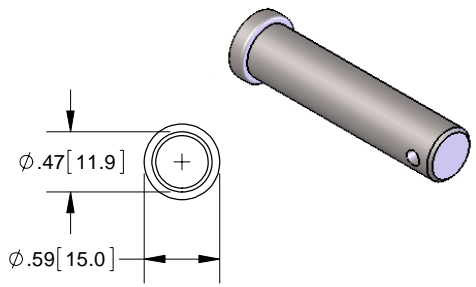
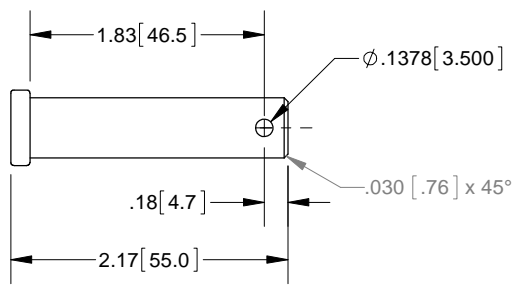
**△ C PACKED VIEW**  
 WITH SPEP MASTER CARTONS INSIDE CRATE, COVERED & STRAPPED

3	1	COTTER PIN	STEEL	ZINC PLATED
2	1	CLEVIS PIN	GRADE 5 STEEL	ZINC PLATED
1	1	CHAIN RETAINER	FORGED STEEL	MILL
ITEM NO.	QTY.	DESCRIPTION	MATERIAL	FINISH

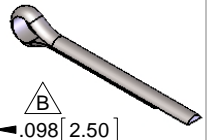
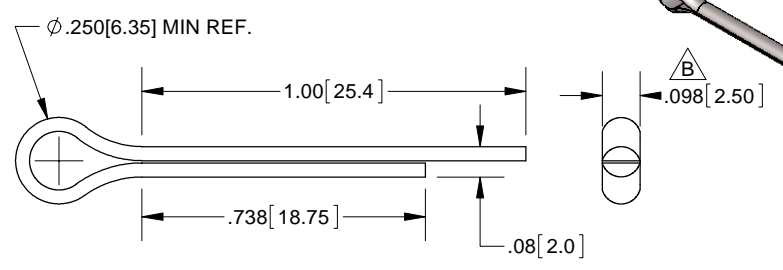
<b>SIERRA PACIFIC</b> ENGINEERING AND PRODUCTS © SPEP.COM	UNSPECIFIED TOLERANCES		DRN BY: <b>PDZ</b>	DATE DRN: <b>10/8/2012</b>	PART NUMBER: <b>D388</b>
	ANGLES: ±3°		CHK BY: <b>BJ</b>	DATE CHK: <b>10/8/2012</b>	DESCRIPTION: <b>LARGE FORGED CHAIN RETAINER</b>
CONFIDENTIAL PROPRIETARY INFORMATION	PLOT DATE: <b>6/17/2013</b>	INCHES	UNITS: <b>INCHES</b>	SCALE: <b>0.75:1</b>	THIRD ANGLE PROJECTION
This document contains information that is the confidential and proprietary property of SPEP and may not be copied, published, or disclosed to others, or used for any purpose other than review, without the express written authorization of an authorized officer of SPEP. This document must be kept only in SPEP's confidential files when not in use.		.XX ±.030	.X ±.76		
		.XXX ±.015	.XX ±.38		
		.XXXX ±.005	.XXX ±.13		
			CUST. NO.:	WEIGHT: <b>1.059</b>	SIZE: <b>A</b>
			CUST. P. N.:	DWG. NO. <b>19250</b>	SHEET <b>1</b> OF <b>2</b> REV. <b>C</b>



**CHAIN RETAINER**



**CLEVIS PIN**



**COTTER PIN**

**SIERRA PACIFIC**  
ENGINEERING AND PRODUCTS © SPEP.COM

CONFIDENTIAL PROPRIETARY INFORMATION | PLOT DATE: 6/17/2013

This document contains information that is the confidential and proprietary property of SPEP and may not be copied, published, or disclosed to others, or used for any purpose other than review, without the express written authorization of an authorized officer of SPEP. This document must be kept only in SPEP's confidential files when not in use.

UNSPECIFIED TOLERANCES

ANGLES: ±3°

INCHES	MM
.XX ±.030	.X ±.76
.XXX ±.015	.XX ±.38
.XXXX ±.005	.XXX ±.13

DRN BY: PDZ	DATE DRN: 10/8/2012
CHK BY: BJ	DATE CHK: 10/8/2012
UNITS: INCHES	THIRD ANGLE PROJECTION
SCALE: 1:1	
CUST. NO.:	
CUST. P. N.:	

PART NUMBER: D388
DESCRIPTION: LARGE FORGED CHAIN RETAINER
CHAIN RETAINER
WEIGHT: 0.642
SIZE: A
DWG. NO. 19250
SHEET 2 OF 2
REV. C-000